

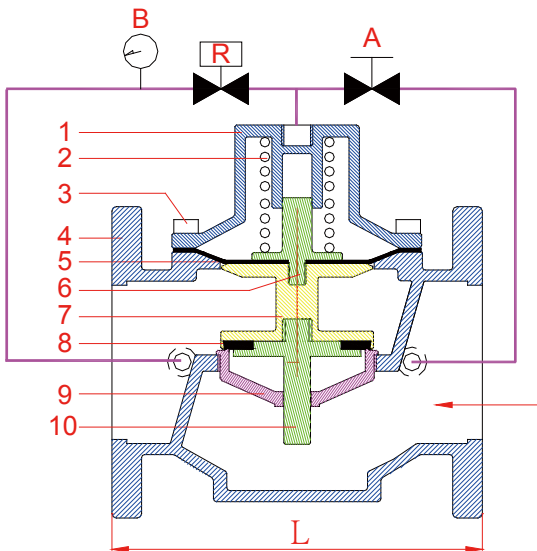
ALTITUDE CONTROL VALVE



- * The Altitude valve maintains the maximum high water level with consistent repeat.
- * The Altitude valve shall close tightly on high level set point and remain closed.
- * Materials of valve body:
Cast Iron, Ductile Iron, Bronze & Stainless Steel
- * Specification: JIS, ANSI, ISO/DIN/BS4504.

Test Pressure		
Ductile Iron	Bronze	Stainless Steel
25bar	21bar	35bar

Working Pressure		
Ductile Iron	Bronze	Stainless Steel
16bar	12bar	22bar



NO	Item Name	Materials		
		Cast Iron	Bronze	Stainless steel
1	Cover	Cast Iron	Bronze	Stainless steel
2	Spring	Stainless Steel	Stainless steel	Stainless steel
3	Fixed Bolt	Stainless Steel	Stainless steel	Stainless steel
4	Main Body	Cast Iron	Bronze	Stainless steel
5	Diaphragm	NBR	NBR	VITON
6	Diaphragm Fixed Bar	Bronze	Bronze	Stainless steel
7	Shaft	Cast Iron	Bronze	Stainless steel
8	Sealing Spacer	NBR	NBR	VITON
9	Seat	Bronze	Bronze	Stainless steel
10	Center Shaft	Bronze	Bronze	Stainless steel
R	Altitude Pilot Valve	Stainless steel	Stainless steel	Stainless steel
A	Needle Valve	Bronze	Bronze	Stainless steel
B	Altitude Gauge	---	---	---

1. Applied conditions: Fluid
2. Applied temperature: -15° ~ 80°C
3. Connection ends: Available for all international standards

- ▶ Water level: 2 ~ 15 m
10 ~ 40 m

- * Please remove impurities or metal dusts inside the pipe thoroughly.
If possible, please add filter to prevent pipe blocking.
- * Adjustment data:
Altitude pilot valve #R:
Turn adjusting screw clockwise to increase reservoir water level.

Flange End

Item No	Size	L
RAF-50	2"	190
RAF-65	2.5"	210
RAF-80	3"	225
RAF-100	4"	250
RAF-125	5"	280
RAF-150	6"	310
RAF-200	8"	420
RAF-250	10"	530
RAF-300	12"	650